

GROVE®

FULL HYDRAULIC

CARRIER-MOUNTED CRANE

TM1275

125 TON CAP.

PCSA CLASS 12-649

RATED LIFTING CAPACITIES IN POUNDS
46 ft. - 205 ft. BOOM
OUTRIGGERS FULLY EXTENDED - 360°

Radius in Feet	Boom Length in Feet									Power Pin. Fly & 141 ft.	32ft. Ext. & 173 ft. 2° Offset	
	*46	58	70	82	94	106	118	130	141			**173
12	250,000 (71.5)	120,000 (75.7)	118,500 (78.2)									
15	200,000 (67.3)	120,000 (72.5)	116,300 (75.6)	112,900 (78.2)								
20	150,000 (59.9)	120,000 (67.1)	101,500 (71.3)	94,350 (74.6)	90,550 (76.9)	87,600 (78.8)						
25	118,000 (51.8)	100,000 (61.4)	89,000 (66.8)	81,100 (70.8)	76,950 (73.7)	73,850 (76.0)	69,950 (77.9)	65,450 (79.5)				
30	95,000 (42.3)	85,300 (55.3)	78,400 (62.1)	71,100 (67.0)	66,750 (70.5)	63,600 (73.2)	59,900 (75.4)	55,800 (77.2)	53,150 (79.3)			
35	78,500 (30.0)	74,000 (48.6)	69,200 (57.2)	62,600 (63.0)	58,900 (67.1)	55,750 (70.3)	52,200 (72.8)	48,350 (74.9)	45,450 (77.2)			
40		64,850 (41.0)	61,200 (51.9)	54,700 (58.9)	52,650 (63.7)	49,450 (67.3)	46,050 (70.2)	42,500 (72.5)	39,300 (75.0)	35,000 (78.6)		
45		54,160 (31.6)	54,150 (46.2)	48,300 (54.5)	46,900 (60.1)	44,350 (64.3)	40,700 (67.5)	37,700 (70.2)	34,250 (72.9)	33,350 (76.9)	21,500 (80.0)	
50		46,030 (17.2)	46,030 (39.7)	43,050 (49.8)	41,800 (56.4)	40,100 (61.1)	36,250 (64.8)	33,650 (67.7)	30,100 (70.7)	29,500 (75.1)	19,900 (78.7)	
60			31,720 (21.6)	31,720 (39.2)	31,720 (48.3)	31,720 (54.5)	29,250 (59.1)	27,100 (62.7)	23,600 (66.2)	23,400 (71.6)	16,850 (75.8)	
70				22,670 (24.4)	22,670 (38.8)	22,670 (47.1)	22,670 (53.0)	21,850 (57.4)	18,700 (61.5)	18,850 (68.0)	14,600 (72.8)	
80					17,010 (26.3)	17,010 (38.6)	17,010 (46.2)	17,010 (51.8)	14,900 (56.5)	15,300 (64.2)	12,850 (69.7)	
90						12,600 (27.7)	12,600 (38.5)	12,600 (45.5)	11,900 (51.2)	12,500 (60.3)	11,450 (66.6)	
100							8,840 (28.8)	8,840 (38.4)	8,840 (45.3)	10,200 (56.2)	10,050 (63.4)	
110							5,500 (12.1)	5,500 (29.8)	5,500 (38.7)	8,280 (51.9)	8,200 (60.1)	
120								2,660 (16.6)	2,660 (30.7)	6,660 (47.3)	6,620 (56.6)	
130										5,040 (42.2)	5,260 (53.0)	
140										3,260 (36.4)	4,100 (49.1)	
150										1,600 (29.5)	3,080 (44.9)	
160											1,980 (40.4)	

NOTE: Boom Angle (degrees) required for given lift appears below the load.

TRAPEZOIDAL BOOM and 32 ft. EXT. NOTES

Capacities appearing in shaded area are based on structural strength and tipping should not be relied upon as a capacity limitation.

*Capacities for 46 ft. boom length shall be lifted with boom fully retracted. If boom is not fully retracted, capacities shall not exceed those shown for the 58 ft. boom length.

**Boom must be fully extended when lifting with extended power pinned fly or with 32 ft. boom ext. (2° offset).

Capacities do not exceed 85% of tipping loads with counterweight fully extended as determined by test in accordance with SAE recommended practice - crane load stability test code SAE J-765.

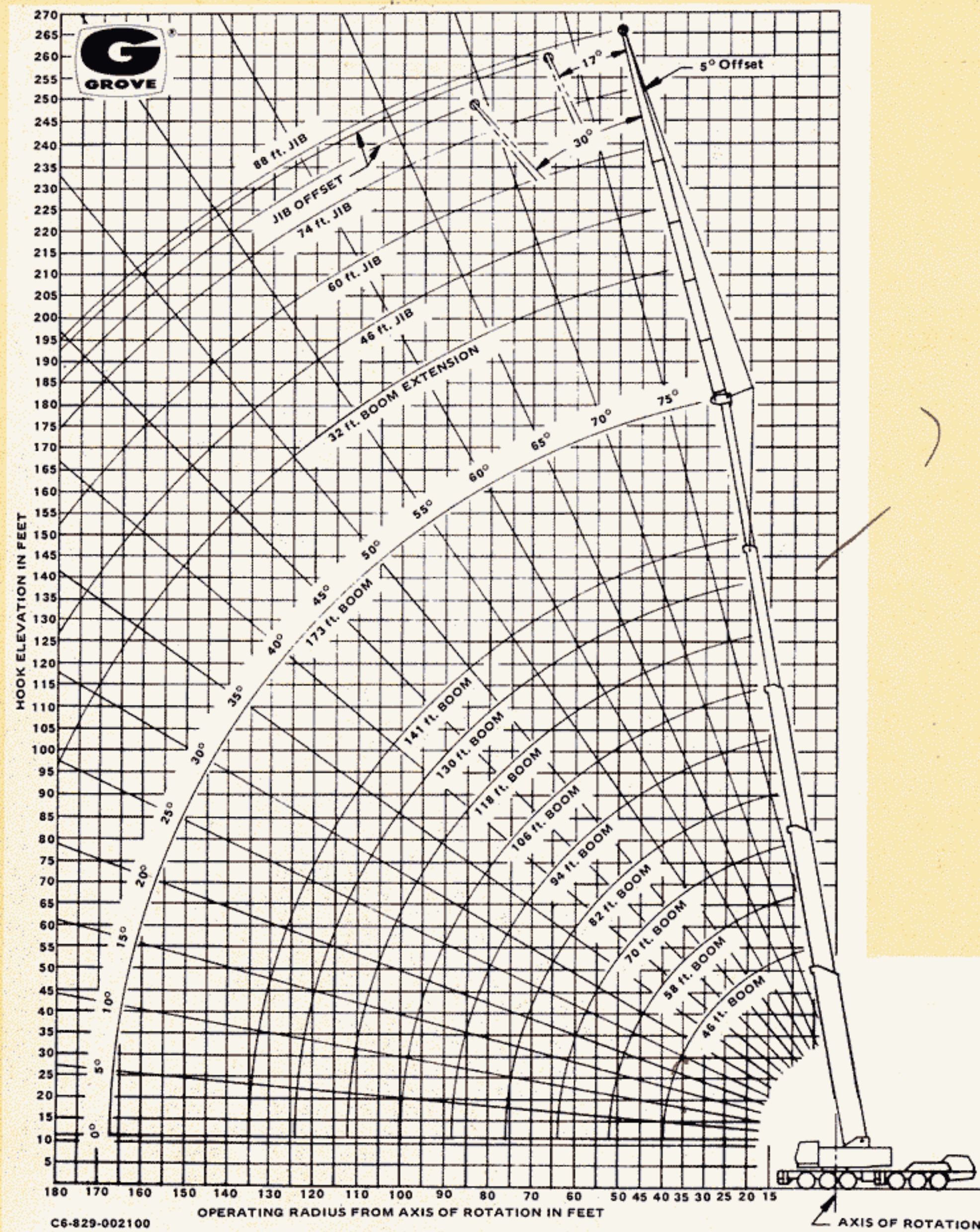
Do not exceed any rated load when lifting regardless of whether it is based on structural strength or stability.

Boom angles are to be used for reference only.

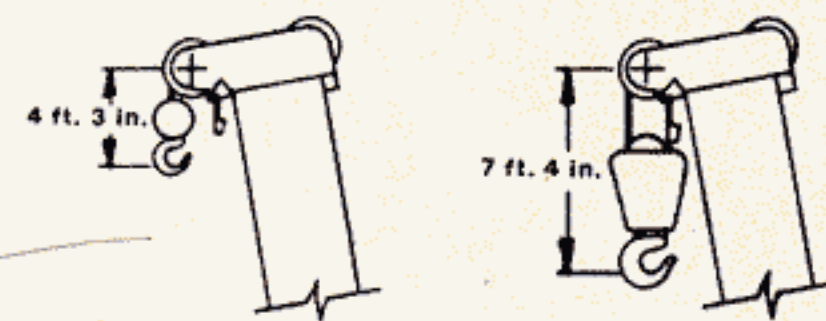
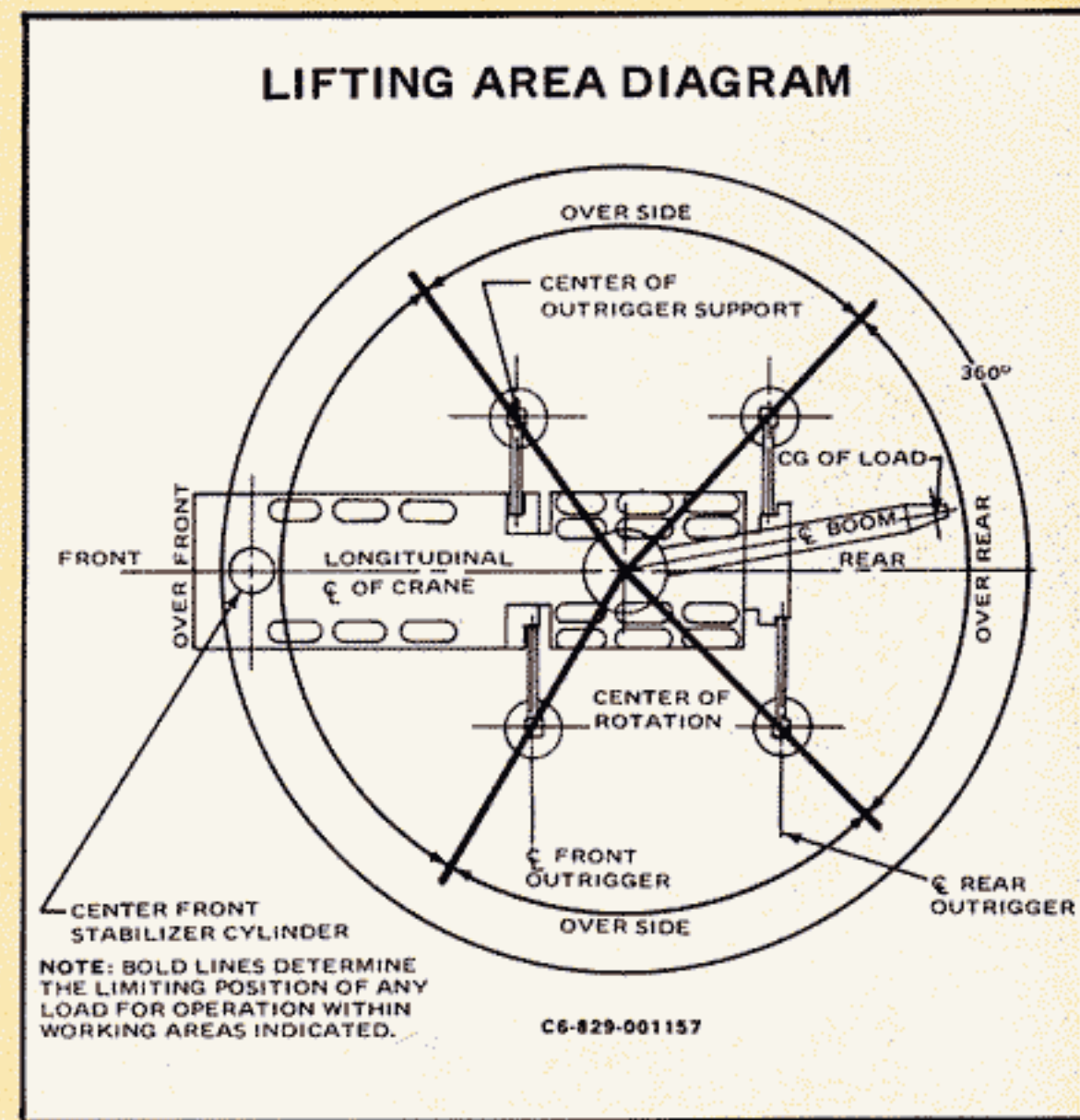
Radii less than 40 ft. not recommended when lifting over front of machine.

Capacities listed are with fully extended outriggers and front jack cylinder extended according to proper procedure.

RANGE DIAGRAM



LIFTING AREA DIAGRAM



NOTES TO LIFTING CAPACITIES

- Rated lifting capacities are based on freely suspended loads. They are the maximum covered by the manufacturer's warranty with the machine leveled and standing on a firm supporting surface. Ratings with outriggers are based on outriggers being extended to their maximum positions.
- Practical working loads for each particular job shall be established by the user depending on operating conditions; including the supporting surface, wind and other factors affecting stability, hazardous surroundings, experience of personnel, handling of load, etc.
- Operating radius is the horizontal distance from the axis of rotation to the centerline of the hoist line or tackle with loads applied.
- "On Rubber" lifting (if permitted) depends on proper tire inflation, capacity, and condition. "On Rubber" loads may be transported at a maximum vehicle speed of 2.5 mi/hr. (4 km./hr.) on a smooth and level surface only.
- Jibs may be used for lifting crane service only. Jib capacities are based on structural strength of jib or main boom and on main boom angle regardless of boom length.
- Operation is not intended or approved for any conditions outside of those shown hereon. Handling of personnel from the boom is not authorized except with equipment furnished and installed by Grove Manufacturing Company.
- For clamshell or concrete bucket operation, weight of bucket and load must not exceed 90% of rated lifting capacities.
- Power-telescoping boom sections must be extended equally at all times. Long cantilever booms can create a tipping condition when in extended and lowered position.
- The maximum load which may be telescoped is limited by hydraulic pressure, boom angle, boom lubrication, etc. It is safe to attempt to telescope any load within the limits of rated lifting capacity chart.
- With certain boom and hoist tackle combinations, maximum capacities may not be obtainable with standard rope lengths.
- With certain boom and load combinations, raising of load with boom lift cylinders may not be possible. Operational safety is not affected by this condition.
- Keep load handling devices a minimum of 12 inches (30 CM) below boom head when lowering or extending boom.
- For multiple part reeving, use one part of line for each 19,230 lbs. of load.
- All load handling devices and/or boom attachments are considered part of the load and suitable allowances must be made.



GROVE MANUFACTURING COMPANY

A DIVISION OF WALTER KIDDE & COMPANY, INC.

SHADY GROVE • PENNSYLVANIA 17256

MEMBER: POWER CRANE & SHOVEL ASSOCIATION

Form No. 1054-175-15M
Sheet 1 of 2

Printed in U.S.A.

Distributed by: